



RECREATE RESPONSIBLY

Know before you go. Scan the QR code or visit www.nps.gov/slbe for current park conditions and availability of restrooms and other facilities.

Make a plan, have extra water, snacks, mask, and sun protection.

Know your limits. Postpone challenging hikes or trying new activities while first responders, parks, and communities continue to concentrate on responding to the pandemic.

Keep it with you. If you brought it, take it with you. Trash pickup and restroom facilities will continue to be limited in many park areas.

Keep your distance. Recreate with the people in your household. Give others plenty of room whether you are on a trail, at a boat launch, or in a parking lot. Follow the CDC's social distancing guidelines and other precautions outlined below.

OPEN

- park trails and trailheads
- Sleeping Bear Heritage Trail
- beaches, lakes, rivers
- picnic areas
- parking areas
- boat launches
- Dune Climb
- vault toilets

CLOSED

- Philip A. Hart Visitor Center in Empire
- all campgrounds and camping
- Pierce Stocking Scenic Drive
- all museums and indoor exhibits
- full-service restrooms

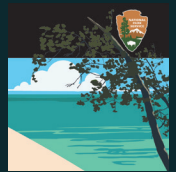
GET THE LATEST INFO

Take a pic of this QR code in a QR code reader



MOBILEAPP

Check out our mobileApp. Search *NPS Sleeping Bear Dunes* in your app store.



COVID-19 PRECAUTIONS

Sleeping Bear Dunes is modifying visitor services to help prevent the spread of infectious diseases. Some facilities and events will be closed or cancelled. Please check locally, on the park website, and in the park app for current information and continue to follow CDC guidelines. As circumstances continue to change, and we modify our operations as necessary, we thank you for your patience and cooperation.



Come prepared. Visitor services are very limited.



Wear face coverings in high-visitation areas and inside visitor facilities.



Maintain social distancing of six feet, especially in high-visitation areas (popular trails, beaches, etc.)



Follow current, state, and national health guidance:

- wash your hands with soap and water or use hand sanitizer
- Avoid touching your face.
- Sneeze or cough into a tissue or the inside of your elbow.



If you are sick, do not visit the park. Self isolate to avoid exposing others.

50



Protect yourself from tick bites

Walk in the center of trails and avoid contact with vegetation.

Use a repellent (on skin or clothing)

Wear closed-toed shoes, long sleeves, long pants, and socks.

Wear light-colored clothing with a tight weave to easily spot ticks.

Check your clothes and any exposed skin frequently for ticks. Avoid sitting directly on the ground, fallen logs, or stone walls.

And, don't forget to check your pets!

Look out for poison ivy

Poison ivy leaves are red in early spring, shiny green in summer, and red or orange in the fall. Each leaf consists of three leaflets. Most people are sensitive in varying degrees to the sap of this plant, which makes skin itch, blister, and swell.

Avoid contact with all parts of the plant. Avoid plants with three leaflets.

If exposed, wash the affected skin with soap and water as soon as possible.

If you find yourself caught in a rip current

Remain calm, swim parallel toward the shore, and wave your arms for help. More details at www.ripcurrents.noaa.gov

October 21, 2020 marks the 50th anniversary for Sleeping Bear Dunes National Lakeshore. The planned year of commemoration has been altered but there will still be an opportunity to recognize this special date.

Join the party!

Share your experiences: [#shareSLBE](#) and [#SleepingBear50](#)

Visit our 50th anniversary page on our website (www.nps.gov/slbe) for the 50th Junior Ranger activity and more celebratory fun.

Join us on social media.

Facebook: www.facebook.com/sbdnl

Twitter: [www.twitter.com/#!/SleepingBearNPS](https://twitter.com/#!/SleepingBearNPS)

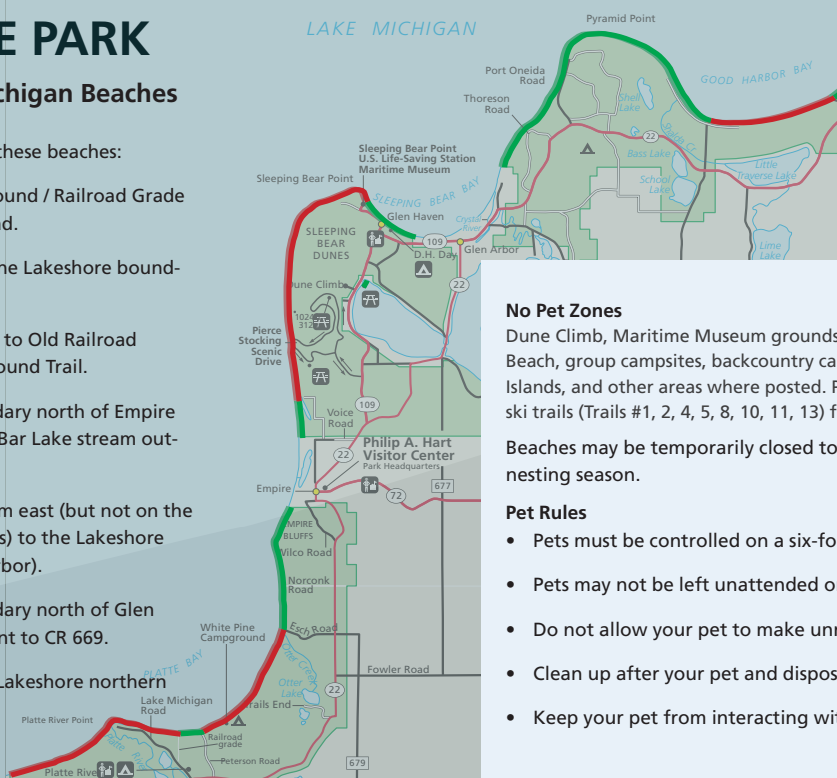
Instagram: <https://instagram.com/sleepingbearNPS>

PETS IN THE PARK

Pet Friendly Lake Michigan Beaches

Leashed pets are allowed on these beaches:

- From Platte River Campground / Railroad Grade trail north to Peterson Road.
- From Esch Road north to the Lakeshore boundary (south of Empire).
- From Peterson Road south to Old Railroad Grade Trail/Platte Campground Trail.
- From the Lakeshore boundary north of Empire to just south of the North Bar Lake stream outlet.
- From the Maritime Museum east (but not on the Maritime Museum grounds) to the Lakeshore boundary (west of Glen Arbor).
- From the Lakeshore boundary north of Glen Arbor around Pyramid Point to CR 669.
- From CR 651 north to the Lakeshore northern boundary.
- Glen Lake Picnic Area.



No park entrance fee today

No Pet Zones

Dune Climb, Maritime Museum grounds, North Bar Lake, Platte Point Beach, group campsites, backcountry campsites, North and South Manitou Islands, and other areas where posted. Pets are not allowed on designated ski trails (Trails #1, 2, 4, 5, 8, 10, 11, 13) from December 1 to March 31.

Beaches may be temporarily closed to pets during piping plover nesting season.

Pet Rules

- Pets must be controlled on a six-foot leash.
- Pets may not be left unattended or tied to an object.
- Do not allow your pet to make unreasonable noise.
- Clean up after your pet and dispose of waste in trash receptacles.
- Keep your pet from interacting with wildlife or disturbing park visitors.